



MOUNTING NUTS

Stud Nut

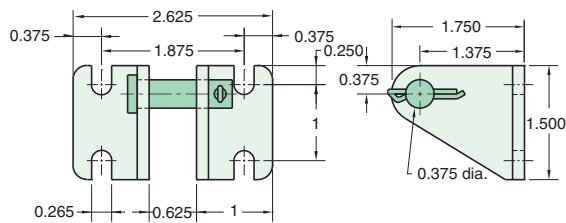
Part Number	Across Flats	Nut Thickness	Nut (Thread)
<u>N12-16</u>	1 3/32"	27/64"	3/4-16

Rod Nut

Part Number	Across Flats	Nut Thickness	Nut (Thread)
<u>N08-20</u>	3/4"	5/16"	1/2-20

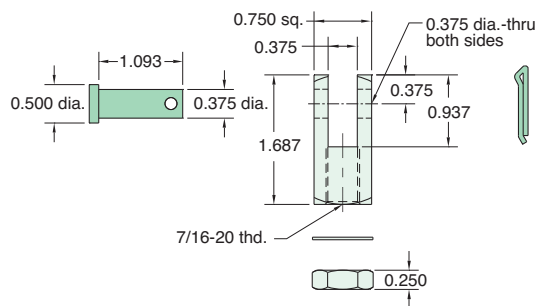
CB-2495

Clevis Bracket
Material: Steel, bright zinc plated



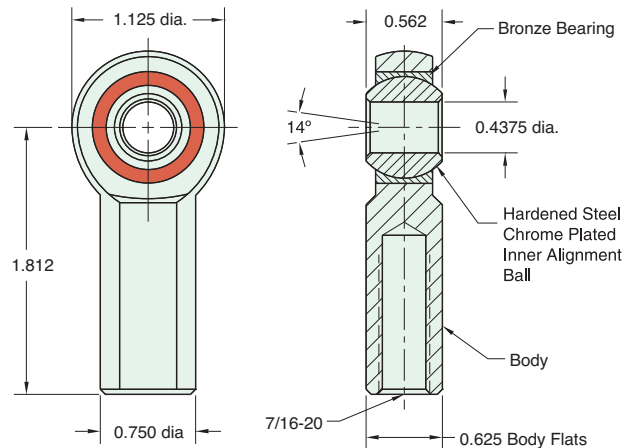
RC-2481

Rod Clevis
Material: Steel, electroless nickel plate



RE-2485

Rod End
Material: Steel, bright zinc plated body



Lockwasher

Locknut

Max. Static Radial Load (rod end only): 4,300 lbs.
Fits Rod Thread Size: 7/16-20

FB-2491

Foot Bracket
Material: Steel, bright zinc plated

